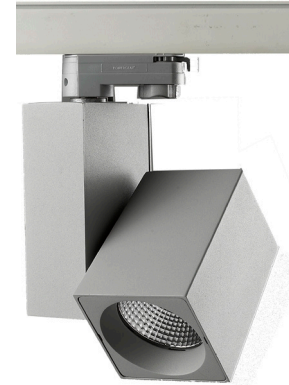
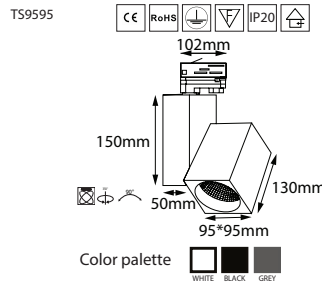


Model TRIX TS8585

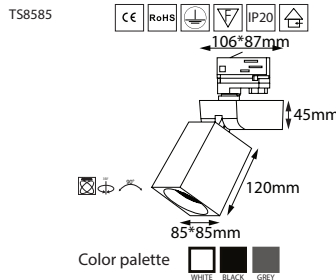
Input Voltage 110-240VAC, 220-240VAC /50-60Hz
 Power 28W
 Light Source led Lamp Led COB Cree
 Beam angle 12°, 24°, 36°
 CCT 3000K,4000K, 5000K
 Light Efficiency ~2450lm
 CRI >85 CRI>90.
 Gear box driver, Philips, HEP
 Operating Temperature -25°c~+50°c
 High efficiency AL.Anodized Specular Silver Reflector

Model TRIX TS9595

Input Voltage 110-240VAC, 220-240VAC /50-60Hz
 Power 35W
 Light Source led Lamp Led COB Cree
 Beam angle 12°, 24°, 36°
 CCT 3000K,4000K, 5000K
 Light Efficiency ~3100lm
 CRI >85 CRI>90.
 Gear box driver, Philips, HEP
 Operating Temperature -25°c~+50°c
 High efficiency AL.Anodized Specular Silver Reflector

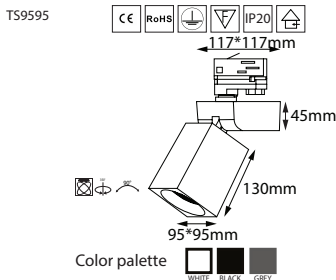


TRIX SERIES



Model VENICE TS8585

Input Voltage 110-240VAC, 220-240VAC /50-60Hz
 Power 28W
 Light Source led Lamp Led COB Cree
 Beam angle 15°, 30°, 45°, 55°
 CCT 3000K,4000K, 5000K
 Light Efficiency ~2450lm
 CRI >85 CRI>90.
 Gear box driver, Philips, HEP
 Operating Temperature -25°c~+50°c
 High efficiency AL.Anodized Specular Silver Reflector



Model VENICE TS9595

Input Voltage 110-240VAC, 220-240VAC /50-60Hz
 Power 35W
 Light Source led Lamp Led COB Cree
 Beam angle 20°, 24°, 30°, 40°, 55°
 CCT 3000K,4000K, 5000K
 Light Efficiency ~3100lm
 CRI >85 CRI>90.
 Gear box driver, Philips, HEP
 Operating Temperature -25°c~+50°c
 High efficiency AL.Anodized Specular Silver Reflector



VENICE SERIES